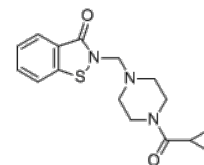


Product Name : LOC-14
Cat. No. : PC-70321
CAS No. : 877963-94-5
Molecular Formula : C₁₆H₁₉N₃O₂S
Molecular Weight : 317.41
Target : Protein Disulfide Isomerase (PDI)
Solubility : 10 mM in DMSO



Biological Activity

LOC-14 is a small molecule reversible **Protein disulfide isomerase** (PDI) inhibitor with K_d of 62 nM.

LOC14-induced oxidation of PDI has a neuroprotective effect not only in cell culture, but also in corticostriatal brain slice cultures.

LOC-14 exhibits high stability in mouse liver microsomes and blood plasma, low intrinsic microsome clearance, and low plasma-protein binding.

References

Kaplan A, et al. Proc Natl Acad Sci U S A. 2015 Apr 28;112(17):E2245-52.

Vatolin S, et al. Cancer Res. 2016 Jun 1;76(11):3340-50.

Caution: Product has not been fully validated for medical applications. Lab Use Only!

E-mail: tech@probechem.com